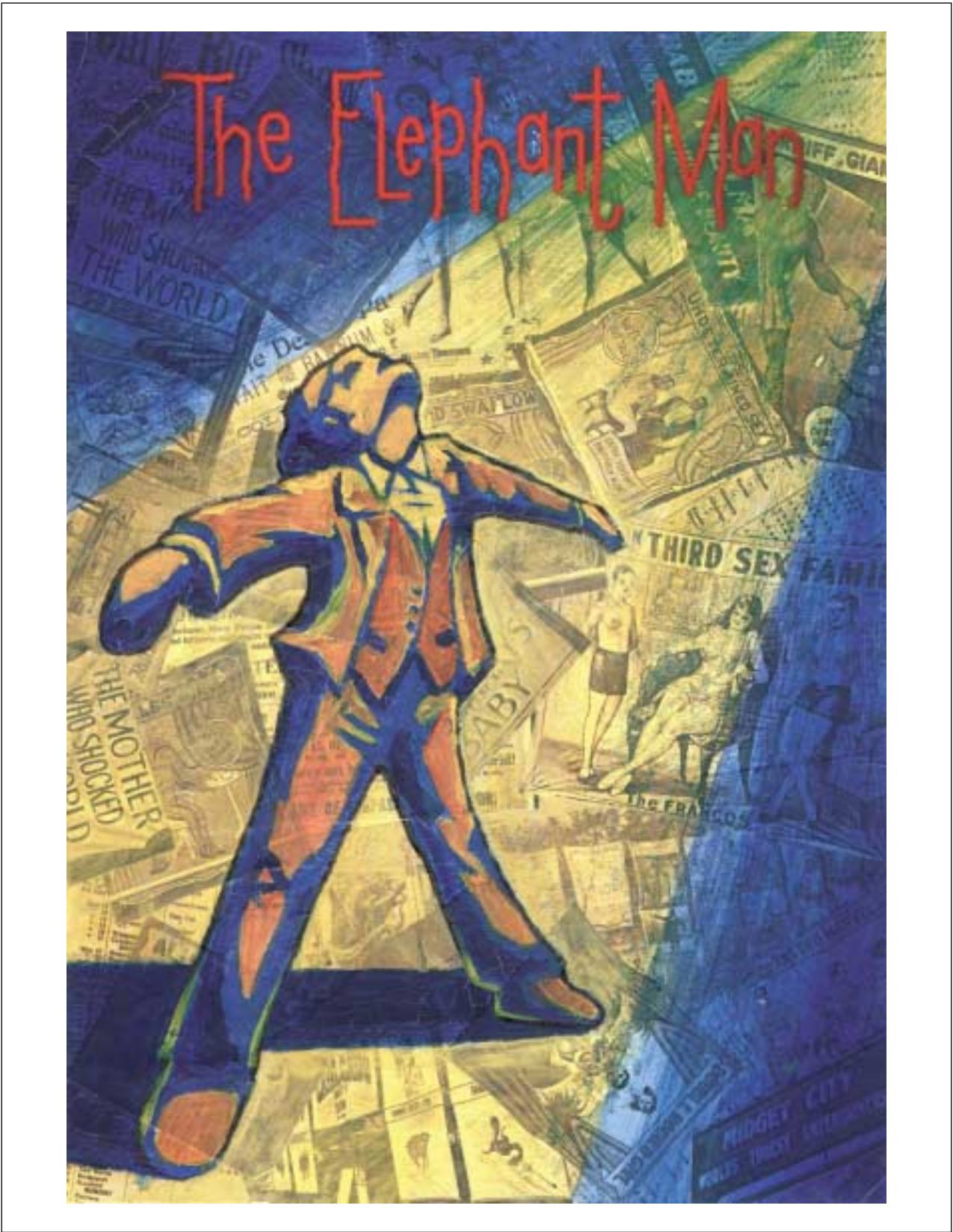


watercolor and colored pencil on parchment paper  
actual size: 7 1/2 inches x 9 inches



collage and watercolor  
actual size: 8 inches x 11 1/2 inches



charcoal and conte crayon on toned paper  
actual size: 18 inches x 24 inches

Flite 3 Studios is the leading post production facility in the Mid-Atlantic region featuring audio, video and new media services. When it comes to delivering outstanding production, they not only wrote book, they also filmed, edited, recorded, mixed it and added eye popping visual effects. In fact, department for department, Flite 3 Studios can match anything you can get in the Big Apple (except the stress and high prices).

film video sfx/animation multimedia post production film video sfx/animation

**Flite 3** REEL PROFESSIONALS  
STUDIOS 1130 E. Gold Spring Ln., Baltimore, MD 21238 p 410.532.7600 f 410.532.5418

Illustrator 9.0 and Photoshop 6.0  
actual size: 5 1/2 inches x 8 1/4 inches



# Interactive Multimedia

for CDROMs, Internet & Computer Presentations

Digital Video **Interactive Multimedia** Web Design  
Graphic Design Photography Presentation Services



1850 York Road, Suite G, Timonium, MD 21093  
Tel 410.561.4550 Fax 410.561.4555  
www.mediadimensions.com info@mediadimensions.com

The definition of **interactive media** is elusive. It changes as technology moves forward.

Interactive media, at its core, is non-linear. It enables users to browse and react; to **actively acquire information** at their own pace. Its architecture is open.

It encourages random access, **freedom** to zig-zag, rather than move in a straight line. It is the **evolutionary way of communicating** in the modern age.

We combine advanced interactive design and delivery technologies, such as CDROMs and DVDs, with our **experience** in business communications and skill in all media disciplines. The result is an **integration** of audio, video, and graphics into presentations that are stunning in sight, sound, and content.

## NOBLE STEED PRODUCES VIDEO FOR CHRISTIANA CARE HEALTH SYSTEMS



"What is the Meaning of Unsurpassed Excellence?" is the theme and title of a video recently produced by Noble Steed for their client, Christiana Care Health Systems, Wilmington, DE.

The 11-minute video was conceived and produced to strengthen internal esprit de corps. Throughout the video, individual staff members' answers to "what is the meaning of unsurpassed excellence?" are showcased. The video will be revised for use in a variety of external marketing activities.

The Noble Steed/Flite 3 team consisted of Steve Ayd, videographer; Michael Gray, scriptwriter; John Ballard and Pat O'Brennan, project coordinators; Larry Cedrone, Avid editor; and Joel Michon, art director.

## PAT O'BRENNAN COMPOSES JINGLE FOR MAYOR'S PSA CAMPAIGN

Pat O'Brennan, Flite 3 account executive and noted composer and performer, was recently commissioned to compose a jingle for the Baltimore Office of the Mayor's PSA trash campaign.

The 60-second R&B jingle, "Clean-Up is Contagious," began airing on local radio stations shortly after the official fall clean-up initiative and launch by Mayor Martin O'Malley.

Two versions of the jingle were produced with vocals by Aleta Greene and Pat O'Brennan. The jingle was recorded at Clean Cuts Music, engineered by Vic Giordano and featured Andy Hamburger on drums, David Stambler on sax, Vic Giordano on keyboards and Pat O'Brennan on guitar.



ALETA GREENE



PAT O'BRENNAN

## ALLFIRST BROKERAGE FEATURES MULTI-MEDIA LOBBY

The new corporate headquarters of Allfirst Brokerage at 11 South Charles Street, in the historic Hansa House in downtown Baltimore, features a street level lobby designed by the Blakeslee Group, John Gutierrez Studios and Flite 3.

Highlights of the lobby design include audio/visual installation of a bank of interactive TV screens showing financial programming, a tote board for up to the minute stock information, and several client touch screen terminals.

In addition, John Gutierrez Studios also designed and fabricated the exterior architectural clocks, one hanging on

each side of the building's corners. Flite 3 produced the live webcast of the gala grand opening of the Allfirst Brokerage. The live webcast was the first in the history of Allfirst Bank.

The project team included Trudy Setree, Blakeslee Group; Rita O'Brennan, Flite 3; John Gutierrez, John Gutierrez Studios; John Dillon and Don Rees, Allfirst.



HANSA HOUSE ON S. CHARLES STREET



watercolor and colored pencil  
actual size: each panel is 4 inches x 3 inches



watercolor and pen  
actual size: each panel is 4 inches x 3 inches

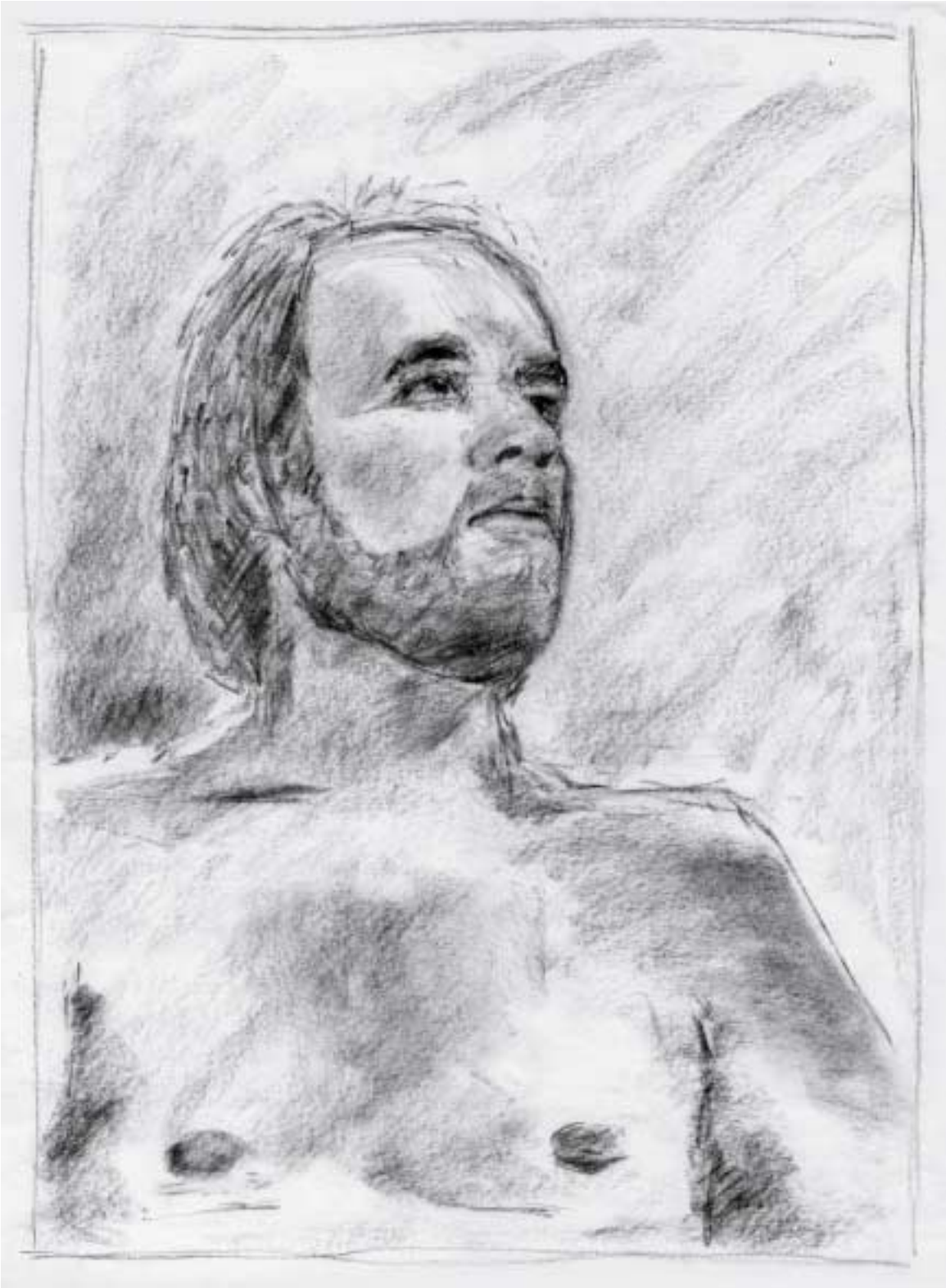




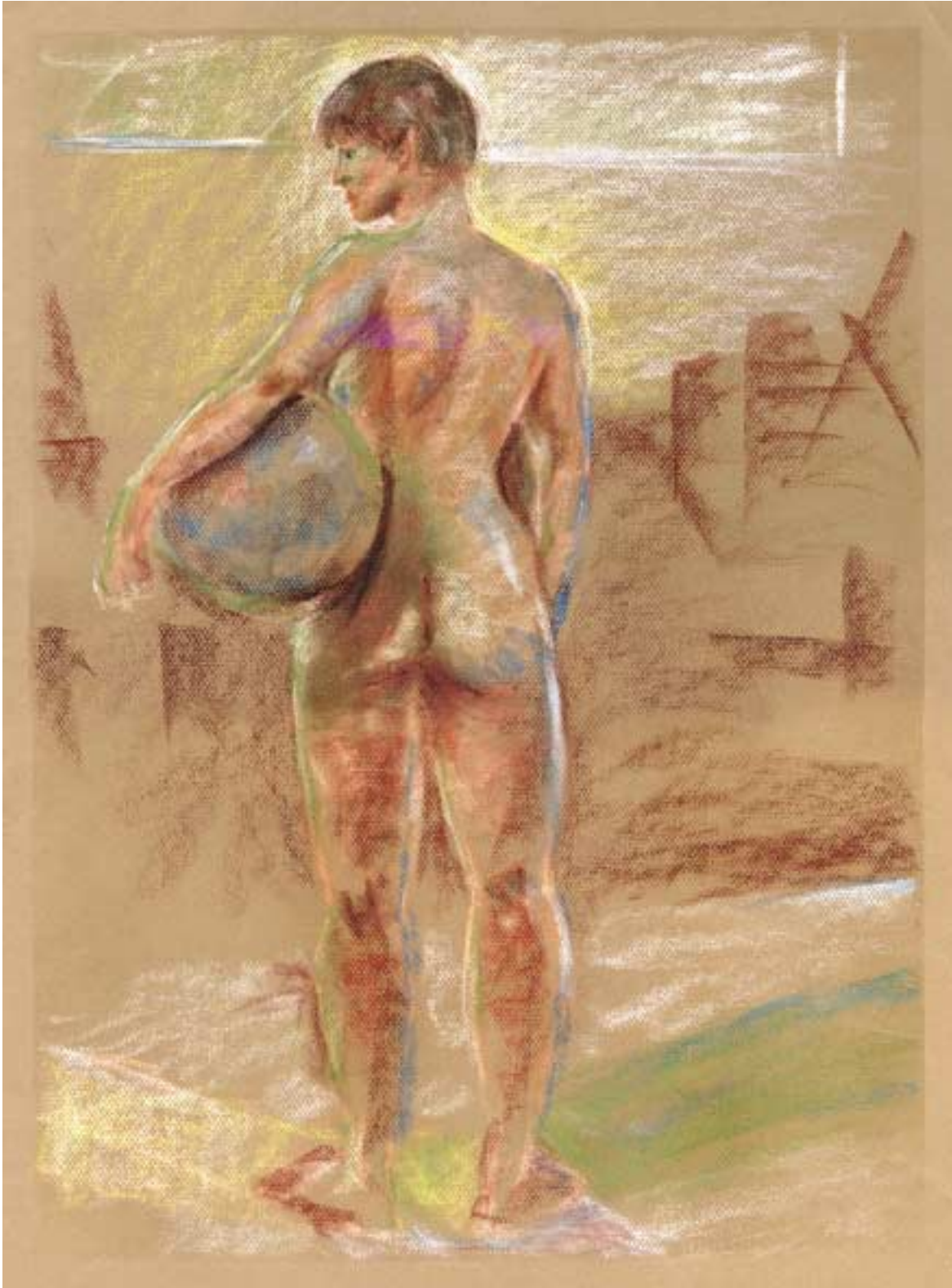
watercolor and colored pencil  
actual size: each panel is 4 inches x 3 inches



ink wash on toned paper  
actual size: 18 inches x 24 inches



charcoal on newsprint  
actual size: 18 inches x 24 inches



pastels on toned paper  
actual size: 18 inches x 24 inches



black and white film  
actual size: 8 inches x 7 1/2 inches



black and white film  
actual size: 5 inches x 9 inches



black and white film  
actual size: 9 inches x 5 inches